

GALAXY® GS6 15.85 MM PRODUCT SPECIFICATIONS

The GS6 is the best full-feature, high-quality Galaxy series yet. This product provides users a display that runs outstanding graphics and animations using the best contrast in the industry. The 15.85 mm pixel pitch is the highest resolution 16 mm LED display in the industry.

15.85 MM TECHNICAL SPECIFICATIONS

Character Height:

4.4" (7 pixel font)

Line Spacing:

15.85 mm (0.62")

Pixel Configuration:

Monochrome: 1 red or 1 amber

RGB: 1 red, 1 green, 1 blue

Maximum Brightness:

Monochrome red: 4,500 nits

Monochrome amber: 6,000 nits

RGB: 12,000 nits

Monochrome Color Capability:

4,096 shades of red or amber

Full Color Capability:

RGB: 281 trillion colors

Optimal Viewing Angle:

140 degrees horizontal x 70 degrees vertical

Readability Angle:

160 degrees horizontal x 90 degrees vertical

Min Viewing Distance:

37'

PRODUCT FEATURES

- All sealed components
- Quick connects
- Mounting clips
- High-contrast louvers
- Redundant module signal
- Large sections for fast installation
- Front ventilation on displays less than seven feet tall
- No spreader beam required for displays greater than seven feet tall
- Same module size and cabinet size for all pixel pitches
- Single-step module removal
- Shallow cabinet depth
- Narrow cabinet borders

MODEL NUMBER GUIDE

GS6	-	100	x	250	-	15.85	-	RGB	-	SF
Series		Lines High		Columns Wide		Line Spacing		LED Color Red, Amber, or RGB		Single Face or Two View



GS6 SERIES SPECIFICATIONS

Estimated LED Lifetime:

100,000+ hours

Contrast Enhancement:

Non-reflective black louvers and module face grooves disperse light

Message Capability:

Text, graphics, logos, basic animation, video clips, multiple font styles, and sizes

Control Software:

Venus® Control Suite

Power:

120, 120/240 VAC Single Phase

Display Dimming:

64 levels (Automatic, scheduled or manual control)

Communication Options:

Ethernet Fiber Optic, Ethernet Bridge Radio, Remote Cellular, Ethernet CAT5

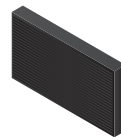
Operating Temperature:

-40°F to 120°F with 99% RH non-condensing

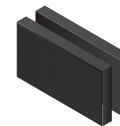
Compliance Information:

UL and cUL Listed, UL-Energy Verified, FCC compliance

DISPLAY CONFIGURATIONS



Single-face (SF)
Available in all sizes



Two-view (2V)
Available in all sizes

